

**KBT****617~960/1695~2700/3300~4200/4800~6000MHz 80°/75°/70°/40°  
7/7/8/8dBi MIMO Directional Panel Antenna****TDJ-Q0660BGE-MY****Application**

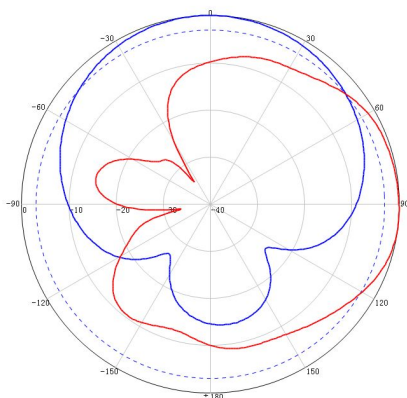
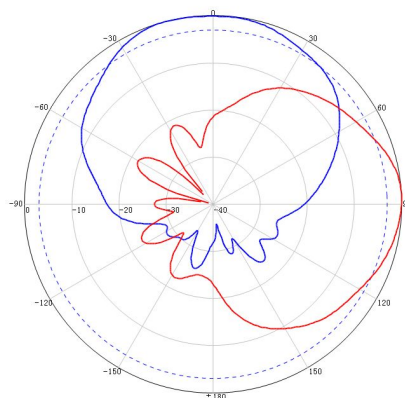
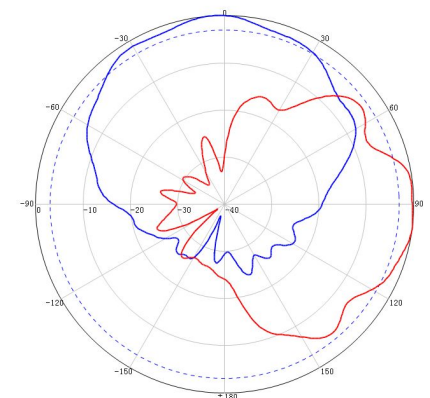
Used in 2G/3G/4G/5G/WLAN system

**Electrical specifications**

Frequency range (MHz)	617~960	1695~2700	3300~4200	4800~6000
Polarization	±45°			
Peak Gain (dBi)	7	7	8	8
Horizontal beam width (°) (Typ.)	80	75	70	40
Vertical beam width (°) (Typ.)	75	60	60	30
Front-to-back ratio (dB,avg.)	15	20	20	15
Isolation (dB)	≥17	≥18	≥20	≥20
Impedance (Ω)	50			
VSWR	≤2.0			≤2.5
Intermodulation IM3 (2×43dBm carrier)	-153dBc	-153dBc	-153dBc	/
Maximum power (W)	50			
Lighting protection	DC Ground			

**Mechanical specifications**

Connector	4*4.3-10 Female or 4*N Female
Exposed cable size (cm)	30
Connector position	Bottom
Antenna size (mm)	495*310*90
Packing size (mm)	740*370*155
Weight (kg)	5.7(Include bracket)
Radome material	Fiberglass
Radome color	White
Operating temperature (°C)	-40~60
Application	Outdoor,Indoor (Mast or optional wall)
Mechanical tilt (°)	±30
Rated wind velocity (m/s)	67
Suitable pole diameter (mm)	50-115
Mounting kit	AZV50Y115A3

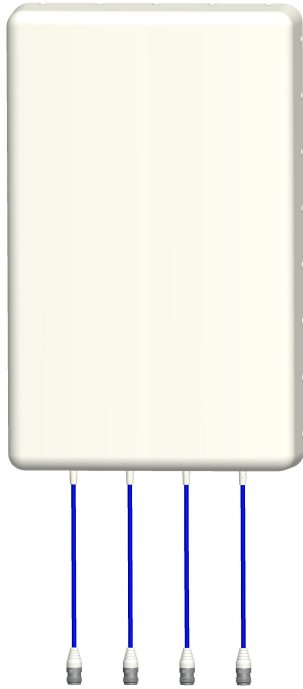
**617~960MHzTypical pattern:****1695~2700MHzTypical pattern:****3300~6000MHzTypical pattern:**



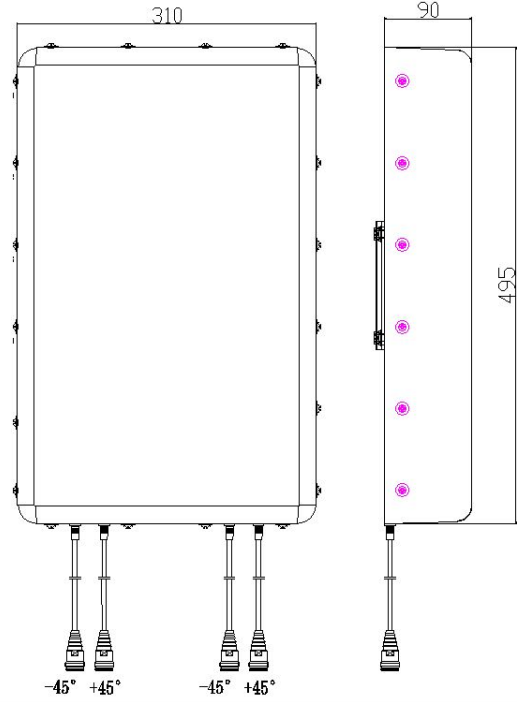
**KBT**

617~960/1695~2700/3300~4200/4800~6000MHz 80°/75°/70°/40°  
7/7/8/8dBi MIMO Directional Panel Antenna

### Product pictures



### Product size



### Installation Sketch

